



# Placement Report 2023

**#1 in India and  
#39 in the World**

FT Global MBA Ranking 2023

**#1 in India**

The Economist Full-Time  
MBA Ranking 2022





**The Indian School of Business** - ISB's vision is to be an internationally top-ranked, research-driven, independent management institution that grooms future leaders for India and the world. Over the years, the school has built associations with top-ranked schools across the globe, such as the Kellogg School of Management, The Wharton School, the London Business School, MIT Sloan School of Management and The Fletcher School. ISB's research output has also been recognised as the highest amongst all B-Schools in India in the last decade. ISB offers the Post Graduate Programme in Management concurrently at two campuses - Hyderabad, Telangana and Mohali, Punjab. The two campuses also follow unified processes for admissions and placements. Both the campuses integrate world class academic and residential facilities that help create a perfect balance between the rigour of intense learning and an enriching campus life. We take pride in being triple accredited by the Association of MBAs (AMBA), EFMD Quality Improvement System (EQUIS), and the Association to Advance Collegiate Schools of Business (AACSB).

**More Talent With Two Campuses:** Retaining the philosophy of 'One school - Two campuses', ISB's admission policy, academic calendar, mix of resident and visiting faculty (from our partner schools and luminary corporate leaders) and placement policy are common for both the campuses. Students are drawn from a common merit list and assigned to either of the campuses randomly in the ratio of class capacities. All aspects of placements are common for both campuses and recruiters have access to the combined pool of talent.



## **Ramabhadran Thirumalai**

Deputy Dean, Programmes

I am happy to share with you the placement report for the PGP Co' 23. Our Post Graduate Programme in Management (PGP) has been ranked #39 globally in the Financial Times Global MBA Ranking 2023. We are triple accredited by AMBA, EQUIS and AACSB.

These accreditations represent the highest standard of achievement in post-graduate business education. Our resident and visiting faculty bring cutting-edge curriculum and learning methods into the classroom. This gives our students exposure to best business practices that are current and global.

Our students are trained to see the big picture while diving deep into issues at hand. They have proved their ability to innovate and lead teams across countries and cultures, and are contributing to the success of their respective organisations.

We invite you to further strengthen our association regarding your talent requirements and in other areas of mutual interest.



## **Dibyendu Bose**

Senior Director, Admissions and Financial Aid and Career Advancement Services

ISB evolved from the need for a world-class business school in Asia. We are committed to creating leaders who understand developing economies, have a global perspective and are passionate about making a difference in the world.

Our holistic selection process ensures that we admit students who bring their diverse backgrounds and unique experiences to classroom discussions. PGP Co' 23 exhibited a problem-solving attitude and collaborative approach deeply valued by recruiting organisations. PGP Co' 24 too has students from different walks of life and revels in academic as well as gender diversity with 40% of the class comprising female students.

Our Professional Clubs act as a catalyst for meaningful interactions with the industry and other stakeholders. Knowledge sessions with alumni on various industries and functions equip students with key insights in relevant domains. Such beyond-the-classroom initiatives combined with multidisciplinary experience and academic rigour at ISB prepare our students for all levels of leadership roles in the future.

We are confident that you will find the right talent for your organisation and look forward to a continued partnership with you.



## **Kiran Neti**

Director and HoD, Career Advancement Services

Thank you for showing your interest in partnering with ISB for your strategic talent requirements.

The PGP Co' 23 had a plethora of opportunities on the placements front in terms of diverse roles and responsibilities that came their way as well as the salaries offered. Our students were sought after by the entire spectrum of corporates, including the government and semi-government spaces, well-established MNCs and conglomerates, unicorns, as well as new age firms. More than two-thirds of the PGP Co' 23 could pivot their industry and function with several of them accepting leadership roles in India and abroad.

We will continue to work with you to enable your strategic talent needs at all levels. Our team will get in touch with you to help you maximise your talent sourcing efforts by engaging with our students through speaker sessions, leadership talks and workshops. This will help you better understand the talent that ISB has to offer and will also help our students understand how they can contribute to your organisation. We could also connect you with other parts of ISB to forge a deeper and wider relationship.

We look forward to welcoming you once again for the placements of Co' 24.



# Placement Highlights for PGP Co' 23

---

99.4%

of students secured  
jobs at graduation

30<sup>+</sup>

first-time recruiters

154%

increase in pre-ISB  
vs post-ISB salaries

31

international offers  
from diverse geographies

## Top Six Domains in terms of Offers

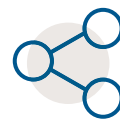
---



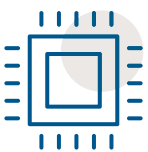
**Consulting**



**Finance**



**Supply Chain  
& Operations**



**Technology**



**Sales & Marketing**



**General Management**

# Placements Trends for PGP Co' 23

---

A total of 324 companies registered for campus placements of the Co' 23 and generated 1609 job offers. The foundation of the successful placement season was laid by inviting more than 250 companies for the pre-placement process, seminars, workshops and industry treks. Senior executives and our alumni in these organisations came and shared their insights, and views on the latest trends prevalent in respective industries. While deepening relationships with our existing recruiters we also got a roster of more than 30 first-time clients, who came and hired talent from ISB.

## **Consulting And Technology Firms Repose Confidence In Our Students**

Consulting and Technology were the top two recruiting sectors at ISB with almost half the offers coming from them. There were opportunities for students from across work experience range, and cutting across sectors and industries in consulting. Companies reposed their faith in ISB talent, hiring for strategic and digital transformation projects for their clients. Companies in the technology space – established players as well as startups in the domain of e-commerce, payment solutions, analytics, gaming, healthcare, transportation and retail, among others – hired from the batch for roles in product management, programme management, sales and business development and digital marketing and transformation.

## **Diverse Leadership And General Management Roles**

More than 60 leadership roles were offered to the PGP Co' 23 by companies across geographies and sectors, continuing the trend of companies hiring ISB students in large numbers for their prestigious leadership and management training programmes. These roles are aimed at building the leadership pipeline for the participating companies, with many of them giving exposure to students to various functions and arranging interactions with the top leadership in their organisations. Over the years, companies have found talent from ISB for crucial leadership and strategy roles such as Entrepreneur-in-Residence, Chief of Staff, EA to CXOs and MDs, Founder's Office, CEOs Office and Manager CEO among others.

## **Women Participation And Leadership Roles For Women On The Rise**

The Co' 23 had 37% women students in the batch. Women students fared exceptionally well, both, in terms of offers received, as well as roles. Reflecting a trend of recruiting women for strategic roles, several leading companies offered roles such as Country Head, Country Manager, DGM, EA to CEO and General Manager, among others. We continue engagement with existing and new clients that are looking at building their middle and senior level leadership pipeline. The Co' 24 has 41% women and with it, come more choices for an organisation to fulfill their strategic talent hiring among women candidates. The Women in Business Club at ISB works with the CAS team to get women leaders and alumni to share their experience with students.



### **BFSI Segment Hiring Picks Up For The Co' 23**

The BFSI sector made 11% of the total offers to the Co' 23. The four main segments in BFSI recruitments were from investment banking and private equity, corporate banking and treasury, fintech and consumer banking and global capability and offshore centres. GCCs based out of leading job markets of India proactively hired ISB talent to ramp up their leadership teams. Leading private sector as well as multinational banks, along with marquee investment management and private equity firms, continued to make their presence felt on the campus and picked up talent from ISB.

### **Strategic Hiring In Operations, Supply Chain, And Urban Mobility Sectors**

Marquee names, along with startups in supply chain and operations, hired in large numbers to expand their teams. Companies in urban mobility and electric vehicles registered a strong presence on the campus. This space includes unicorns and decacorns who partner with ISB to fulfill their talent requirements across management levels. They have offered multiple roles in product management, sales, project management, strategy and operations, among others.

### **International Placements Show An Uptick**

A total of 31 international offers were generated for the class across diverse regions – South-East Asia, Middle East, Africa, Europe, and USA. A new category of leadership sessions helmed by corporate leaders from international organisations helped students understand opportunities in today's global business environment. With a significant number of our alumni working in international markets, and with increased opportunities after the Covid-19 pandemic, there is renewed momentum to connect with recruiters from international markets.

### **The Depth Of Experience Offered By Senior Executive Members In the Cohort**

With a work experience range of 8-24 years and an average of more than ten years, the approximately 55+ senior executive members of the batch every year represent the pinnacle of experienced talent that ISB has to offer to its talent partners. Cutting across industries and functions, recruiters from consulting, BFSI, technology, sales and marketing, supply chain and operations, and healthcare, among others, hired for senior level roles including Managing Partners, Directors, Vice-Presidents, General Managers, Business Heads and Division Heads this year.



# Profile of Co' 23

Class Size

**845**

Avg Age

**27.09**

Work Exp

**4.07**

Avg GMAT

**720**

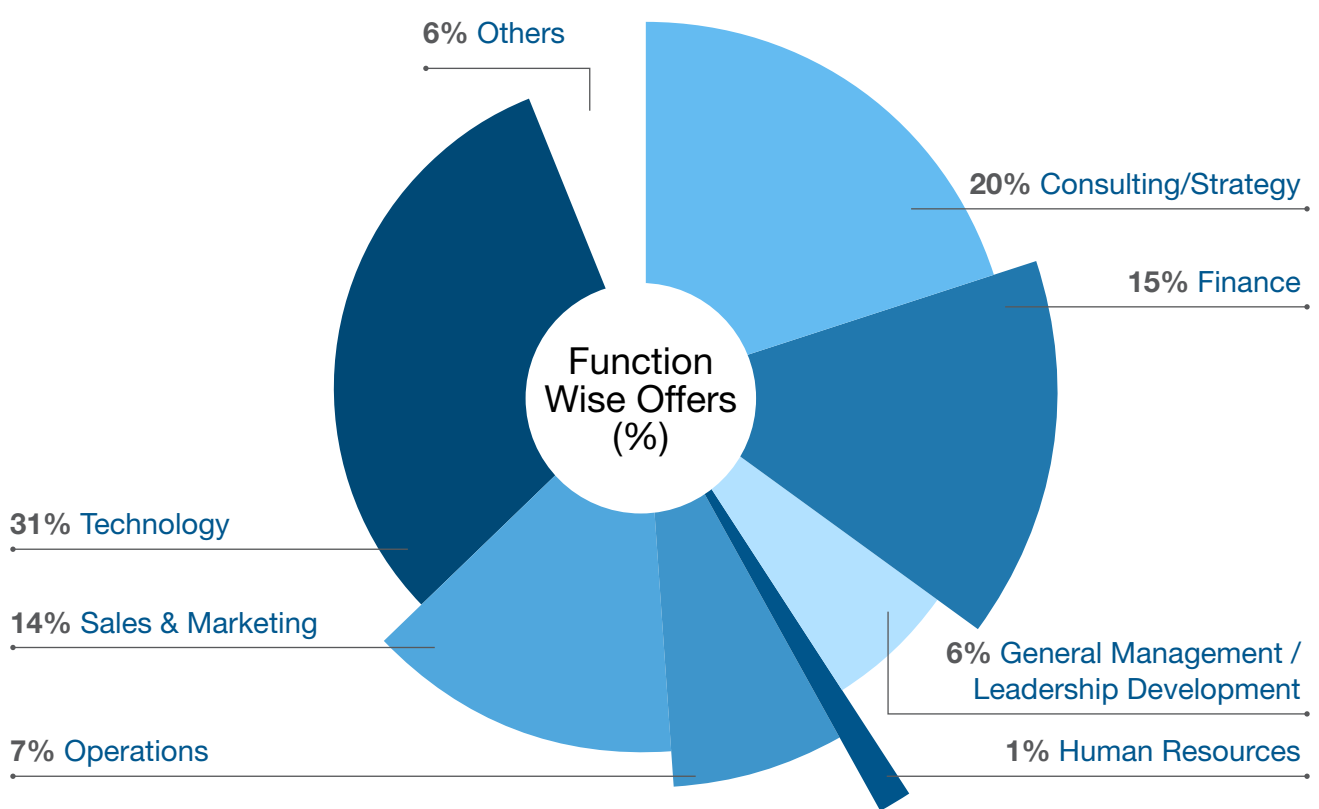
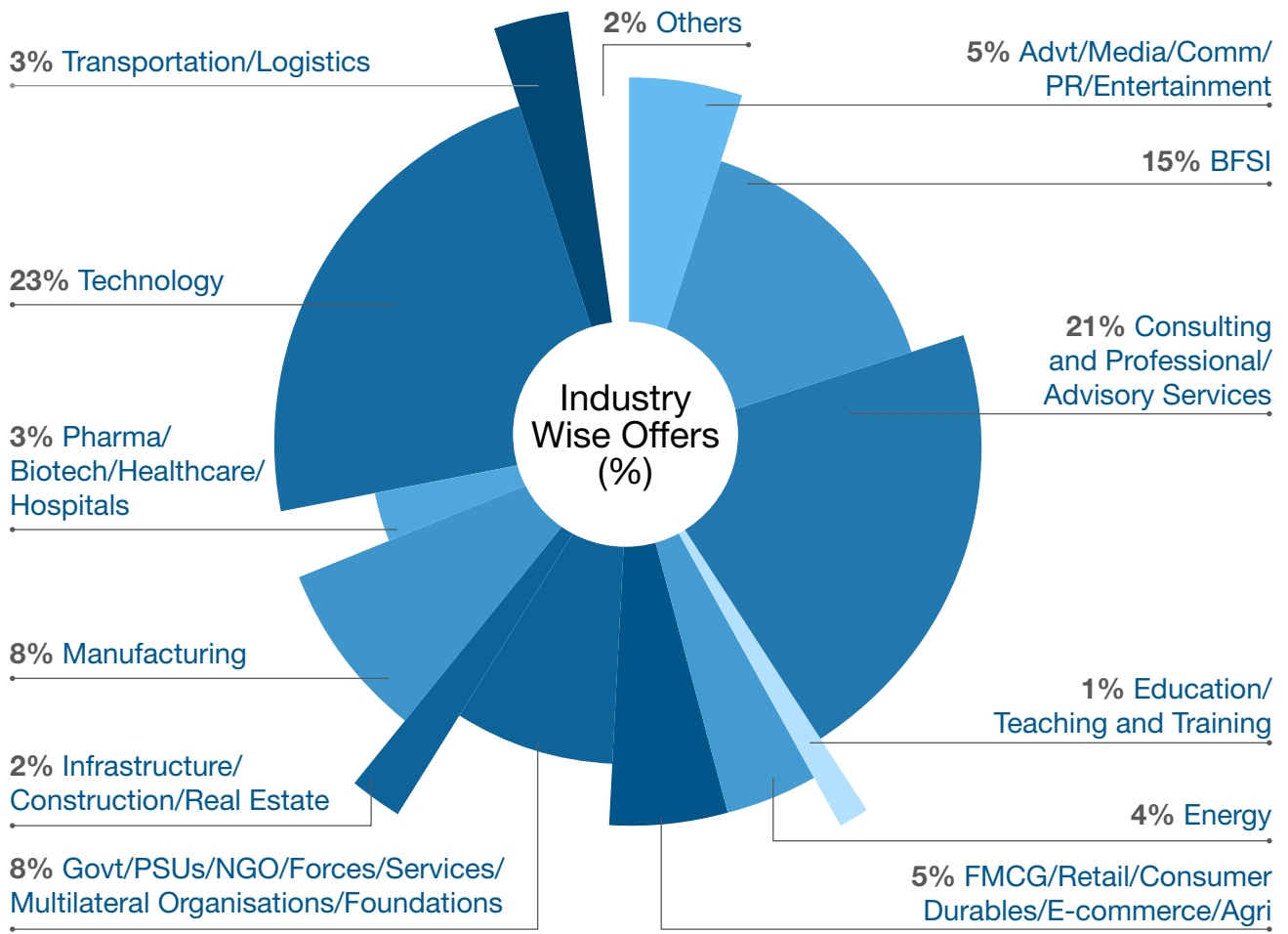
## Year On Year data for 80% Mean and Median CTC (INR)

Class Year	80% Mean	80% Median
Co' 19	24,35,915	24,02,449
Co' 20	25,06,850	24,10,000
Co' 21	27,13,055	27,00,000
Co' 22	32,76,366	31,00,000
Co' 23	33,25,742	32,00,000

## Year on Year Data for Companies and Offers

Class Year and Size	Registered Companies	Offers
Co' 19 - 884	373	1309
Co' 20 - 890	433	1504
Co' 21 - 690	308	1195
Co' 22 - 929	393	2072
Co' 23 - 845	324	1609





# Comparison (2022-2023)

Industry Wise Offers	Co' 22 (%)	Co' 23 (%)
Advt/Media/Comm/PR/Entertainment	4%	4%
Banks/Financial Institutions/ Financial Services/Insurance	12%	11%
Conglomerates/Diversified	2%	6%
Consulting & Professional Services	37%	31%
Education/Teaching & Training	1%	1%
FMCG/Retail/Consumer Durables/E-commerce/Agri	5%	10%
Govt/PSUs/NGO/Forces/Services/Multilateral Organisations/Foundations	0%	1%
Infrastructure/Construction/Real Estate	1%	2%
Manufacturing	1%	1%
Oil/Energy/Petroleum/Minerals	0%	2%
Others (Exclusive)	1%	2%
Pharma/Biotech/Healthcare/Hospitals	4%	3%
Technology	28%	18%
Transportation/Logistics/Travel and Hospitality	4%	8%

Function Wise Offers	Co' 22 (%)	Co' 23 (%)
Analytics	3%	3%
Business Research	0%	1%
Consulting	37%	27%
Finance	7%	8%
General Management / Strategic Planning	10%	15%
Operations	4%	5%
Others	4%	8%
Product Management	12%	14%
Project Management	1%	2%
Sales & Marketing	18%	14%
Technology	4%	3%

## Industry Wise CTC

Industry Segment	Mid 80% average CTC		80% CTC Range in Lakhs
	Co' 22 (INR)	Co' 23 (INR)	Co' 23
Advt/Media/Comm/PR/Entertainment	32,03,704	32,12,444	24.5 - 40
Banks/Financial Institutions/ Financial Services/Insurance	34,90,064	30,96,269	23.8 - 46
Conglomerates/Diversified	24,63,333	31,26,806	24.0 - 38
Consulting & Professional Services	33,29,759	35,57,509	26.4 - 45
Education/Teaching & Training	28,05,000	43,33,333	35.0 - 60
FMCG/Retail/Consumer Durables /E-commerce/Agri	26,70,934	32,88,207	27.7 - 40
Govt/PSUs/NGO/Forces/Services/ Multilateral Organisations/Foundations	-	32,88,889	18.0 - 40
Infrastructure/Construction/Real Estate	28,00,000	30,00,000	28.0 - 35
Manufacturing	25,35,714	48,83,400	24.0 - 66
Oil/Energy/Petroleum/Minerals	34,00,000	29,58,701	25.0 - 35
Others (Exclusive)	35,01,667	28,50,000	26.1 - 30
Pharma/Biotech/Healthcare/Hospitals	31,64,219	37,03,889	24.5 - 45
Technology	33,89,061	32,86,100	25.0 - 42
Transportation/Logistics/ Travel and Hospitality	35,92,761	29,93,213	23.0 - 38



## Function Wise CTC

Function Segment	Mid 80% average CTC		80% CTC Range in Lakhs
	Co' 22 (INR)	Co' 23 (INR)	Co' 23
Analytics	32,50,858	34,30,148	26.4 - 55
Business Research	-	33,50,000	23.0 - 39
Consulting	33,48,655	36,64,800	27.2 - 45
Finance	29,34,152	29,72,614	24.7 - 40
General Management / Strategic Planning	30,75,110	30,31,538	24.0 - 37
Human Resources	37,00,000	24,00,000	24.0 - 24
Operations	31,79,503	33,35,048	27.0 - 44
Others	35,47,535	28,96,514	20.0 - 36
Product Development	32,50,000	33,26,745	27.8 - 36
Product Management	34,37,971	34,00,022	25.0 - 45
Project Management	31,00,000	28,84,514	26.2 - 32
Sales & Marketing	29,90,804	32,89,290	25.9 - 55
Teaching / Training	-	2320640	23.2 - 23
Technology	44,65,250	36,04,211	28.0 - 45



# Partial List of Recruiters: Past 2 Years

---

AB InBev  
Absolute Foods  
Accenture Services  
Acuvon Consulting Pvt. Ltd.  
Adani Enterprises Ltd.  
Aditya Birla Fashion and Retail  
Aditya Birla Management Corporation Pvt. Ltd.  
ADP Pvt. Ltd.  
Adventure Trip Inc.  
Affinity Global Advertising Pvt. Ltd.  
Alkemi Growth Capital  
Alvarez and Marsal  
Amazon  
Ambit Pvt. Ltd.  
American Express  
Analysys Mason Ltd.  
Apollo 247  
ArcelorMittal Nippon Steel India Ltd.  
Arcesium  
Arthur D. Little  
Atlassian LLP  
Auctus Advisors Pvt. Ltd.  
Avaada Energy Pvt. Ltd.  
Avataar Ventures Partners  
Axis Bank Ltd.  
B9 beverages Pvt. Ltd.  
Bain & Company  
Bain Capability Network  
Bajaj Finserv  
Barclays India  
BeatO (Health Arx Technologies Pvt. Ltd.)  
Bharti Airtel Ltd.  
Biocon Ltd.  
BluSapphire Cyber Systems  
Boston Consulting Group India Pvt. Ltd.  
Brane Enterprises(NSL Hub)  
Brillio Technologies  
BrowserStack  
Capitel Partners  
Cargill Asia Pacific Holdings Ltd.  
Cashfree Payments India Pvt. Ltd.  
Chargebee Technologies Pvt. Ltd.  
Cisco India Pvt. Ltd.  
Climate Policy Initiative India Pvt. Ltd.  
Coforge Ltd.  
Cognizant  
Cogoport  
Credit Suisse  
Curefit Healthcare Pvt. Ltd.  
Daiwa Corporate Advisory India Pvt. Ltd.  
Dalberg Advisors Pvt. Ltd.  
Dallas Venture Partners India LLP  
Decimal Technologies  
Delhivery Ltd.  
Delightful Gourmet Pvt. Ltd. (Licious)  
Deloitte Consulting India Pvt. Ltd. (USI)  
Deloitte India  
DevRev Cloud India Pvt. Ltd.  
DHR Holding Pvt. Ltd.  
Disney - Star  
DP World  
Dr. Reddy's Laboratories Ltd.  
Dr. Vishwanath Karad MIT World Peace University  
Dream11

---

Dtwelve Spaces Pvt. Ltd. (Stanza Living)	Heuristix Digital Technologies Pvt. Ltd. (Disprz)
Eightfold.AI India Pvt. Ltd.	Hexaware Technologies Ltd.
Elasticrun	Hilabs
Enphase Energy	Hilti Technology Solutions India (HTSI)
epiFi Technologies Pvt. Ltd.	Hinduja Group Ltd.
Estee Advisors Pvt. Ltd.	Hindustan Unilever Ltd.
eTrade Marketing Pvt. Ltd.	Honeywell
EVERSANA	HPCL Mittal Energy Ltd.
EXL SERVICE	ICICI Bank
Export Trading Group (ETG)	Incedo Technology Solutions Ltd.
EY GDS	Indegene Pvt. Ltd.
EY India	Indian Political Action Committee (I-PAC)
EY Parthenon - MENA	Indian School of Business
FIITJEE Ltd.	Indus Insights and Analytical Services Pvt. Ltd.
FirstRand Bank Ltd.	Infinity Learn by Sri Chaitanya
FlexiLoans	Infoedge
Flipkart Internet Pvt. Ltd.	Infosys Consulting
FTI Consulting	Innominds Software SEZ India Pvt. Ltd.
Fullerton India Credit Ltd.	Innovaccer Analytics Pvt. Ltd.
Gaja Advisors Pvt. Ltd.	Intueri Consulting LLP
Games24x7 Pvt Lt.	Invest Punjab
Genpact Pvt. Ltd.	IQVIA
GEP Solutions Pvt. Ltd.	ITC Ltd.
Godrej Industries Ltd.	Jio Platforms Ltd.
Goldman Sachs	Jivox Software India Pvt. Ltd.
Google	JK Lakshmi Cement Ltd.
Grant Thornton Bharat LLP	JSW Group
Groww, India	JSW One Platforms
GSN Games India Pvt. Ltd.	Jubilant Foodworks
Gupshup Technology India Pvt. Ltd.	Kalpataru Power Transmission Ltd.
Haber	Kearney
HCL Technologies	Keka Technologies Pvt. Ltd.
HDFC Bank	Kepler Cannon

# Partial List of Recruiters: Past 2 Years

---

KFin Technologies Pvt. Ltd.  
Kotak Mahindra Bank Ltd.  
Kotak Mahindra Capital Company Ltd.  
KPMG Global Service Pvt. Ltd.  
KPMG in India  
L.E.K. Consulting India Pvt. Ltd.  
Landmark Group  
Lenskart Solutions Pvt. Ltd.  
Lithium Urban Technologies  
L'Oreal India Pvt. Ltd.  
Macrotech Developers Ltd. (Lodha)  
Marico Ltd.  
Mastercard India Services Pvt. Ltd.  
Matrix Partners India  
McKinsey & Company  
Media.net  
Meesho  
Mensa Brands Technologies Pvt. Ltd.  
Merilytics  
Merisis Advisors  
MicroSave Consulting Pvt. Ltd.  
Moengage  
MPS Ltd.  
MTX IT Consulting Services Pvt. Ltd.  
Myntra  
Nagarro Software  
Narayana Hrudayalaya Pvt. Ltd.  
Nation with Namu  
Navi Technologies Pvt. Ltd.  
Near Intelligence Pvt. Ltd.  
Netscribes (India) Pvt. Ltd.  
Nextdoorhub International Pvt. Ltd.(NDHGO)  
Nium India Pvt. Ltd.  
Nomura Services India Pvt. Ltd.  
nurture.farm (part of the OpenAg network of UPL)  
Nykaa  
OLA  
OLX India Pvt. Ltd.  
One97 Communications  
OneScreen AI, INC  
Optum Global Solutions  
Osborne Partners Consulting India Pvt. Ltd.  
OYO  
PAD Integrated Marketing and Communications  
Param Hansa Values  
Peoplelink Unified Communications  
Pfizer Ltd.  
Philips India Ltd.  
Phonepe  
Pinelabs Pvt. Ltd.  
Practo  
PricewaterhouseCoopers Middle East  
PricewaterhouseCoopers Pvt. Ltd.  
Procter & Gamble  
Prodapt Solutions  
Protiviti India Member Firm  
Protiviti Middle East Firm  
Providence  
PwC AC  
Quantela Inc  
RAAM Group  
Rapido  
Razorpay  
Redseer Management Consulting Pvt. Ltd.  
Reliance Industries Ltd.



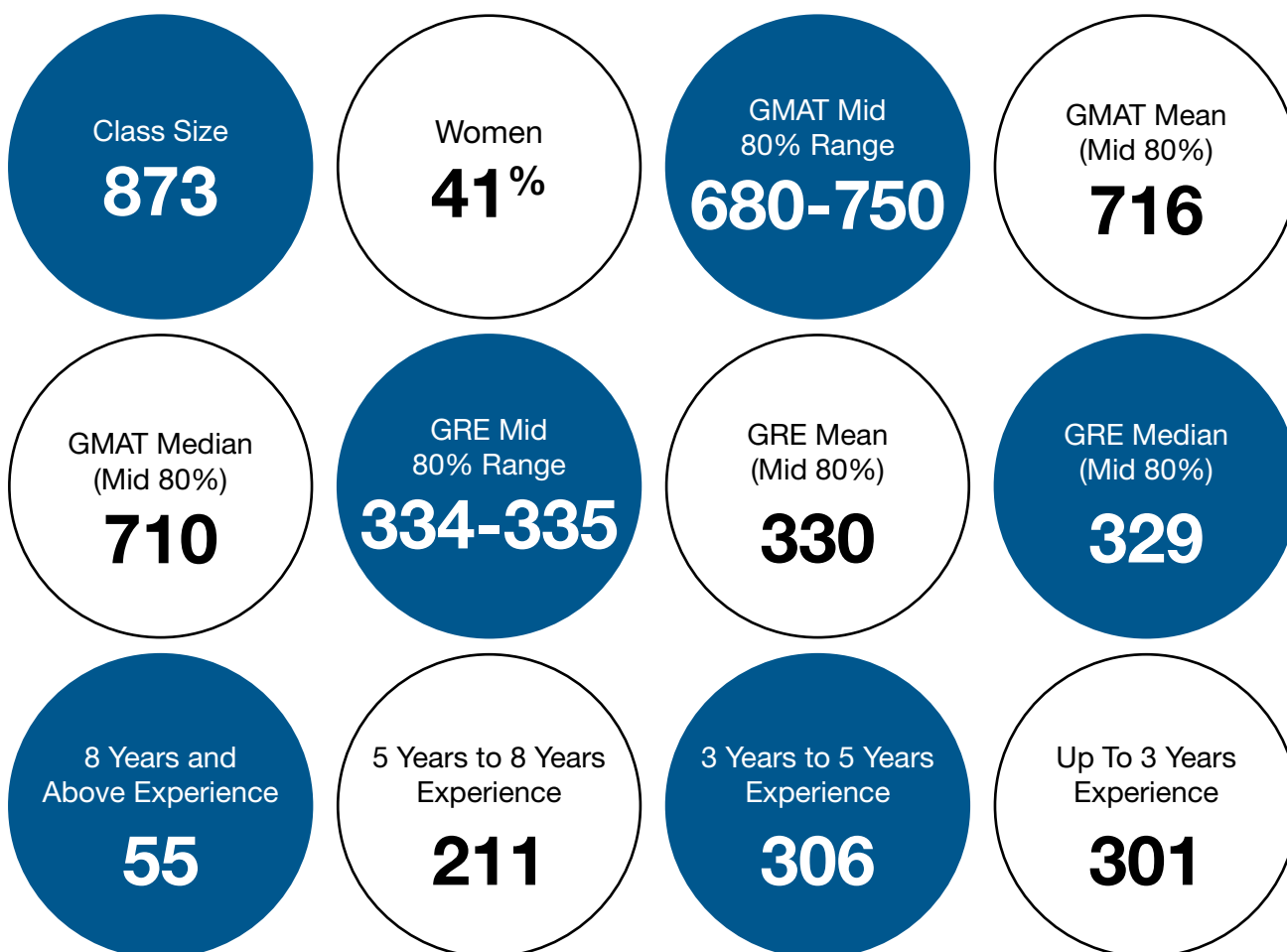
---

Rocketium  
RPG Group  
Rupeek Fintech Pvt. Ltd.  
Salarpuria Sattva Group  
Samagra | Transforming Governance  
Samsung India Electronics Ltd.  
Schneider Electric  
Searce Cosourcing Services Pvt. Ltd.  
Shadowfax  
ShareChat  
Shipsy  
Shree Cement Ltd.  
Siemens Advanta  
Siemens Ltd.  
Siemens Technology and Services Pvt. Ltd.  
Cyllid Technologies Pvt. Ltd.  
Sprinklr  
Sterlite Power Transmission Ltd.  
Swiggy (Bundl Technologies Pvt. Ltd.)  
Tata Digital Ltd.  
The Apparel Group  
TheMathCompany  
Tolaram  
TresVista Financial Services  
Trident Group  
TVS Motor company Ltd.  
Uber India Systems Pvt. Ltd.  
Udaan  
Ula  
United Airlines Business Services Pvt. Ltd.  
UpGuard  
Vahdam India Pvt. Ltd.  
Vastu Housing Finance Corporation Ltd.  
Vector Consulting Group  
VFS Global  
Viacom18 Media Pvt. Ltd.  
Virtusa  
VMware  
VuNet Systems Pvt. Ltd.  
W Health Ventures  
Walmart Global Tech India  
Wells Fargo International Solutions  
WinZO Games Pvt. Ltd.  
Wipro Ltd.  
Wolters Kluwer India Pvt. Ltd.  
Xynteo India Pvt. Ltd.  
Zee Entertainment Enterprises Ltd.  
Zenoti  
ZEPTO  
Zeta Tech  
Zinka Logistics Solutions Pvt Ltd. (Blackbuck)  
Zinnov Management Consulting  
Zomato Ltd.  
ZS Associates  
Zynga Games Network India Pvt. Ltd.

# Profile of Co' 24

We have successfully on-boarded the PGP Co' 24. Students from this class come from diverse work-experience background. We have 41% women students in the class. ISB strives to keep improving and maintaining excellence in its eclectic learning environment and the class demographics reflect our commitment to our vision of grooming future leaders for India and the world. The average age of the class is 27 years, and the average work experience is 4.4 years. Like every year, we have a great mix of talent from engineering and non-engineering backgrounds spreading over a continuum of work experience range from 2 to 24 years.

The one-year Post Graduate Programme in Management (PGP) at ISB attracts the finest talent from various industries with experience across functions. The cohort comprises a pool of students from backgrounds such as Consulting, Finance, Healthcare, Hospitality, Legal Services, Marketing, Technology, Medicine, Merchant Navy and Defence among others. Students come with experience of working across functions and geographies. While their backgrounds may be different, they share the same enthusiasm for taking up challenges and gaining new perspectives. This creates an environment conducive to healthy exchange of ideas and a rich classroom experience.



# Professional Clubs at ISB

---

## **Keystone to Outside The Class Room Learning**

The wide variety of student clubs reflects the diversity of outside the classroom learning opportunities available to ISB community. The clubs give students opportunities to apply their academic learning and to gain invaluable leadership and life skills. In addition to connecting with others who have similar interests, the students get a platform to interact with alumni and professionals in their fields of interest, helping them build formal and informal networks, while exploring career opportunities. Professional Clubs organise Speaker Sessions, Workshops, Peer Learning Sessions and other Learning & Development initiatives that help students make informed choices about their careers post ISB.

## **Business Technology Club**

The Business Technology Club aims to bring together students interested in careers focused at the intersection of business and technology. The club seeks to equip its members with the relevant skills and exposure to achieve their goals by engaging meaningfully with industry leaders, expanding their professional network, and by leveraging members' experience to create and share knowledge.

## **Business Analytics Club**

Working closely with the Business Technology Club, The Business Analytics Club has come on its own with the growing importance of Analytics and Data Science as a critical function across industries. The Club's charter is to help the students get exposure to the ever-growing field of analytics by helping members understand the role of analytics

across industries and to nurture a data-driven approach to problem solving. The club aims at equipping next generation analytics leaders with business acumen and technical know-how required to excel in the decision science/ analytics function and to facilitate skill-development that will enable the members from all industries to make a seamless transition into the data-oriented future world.

## **Consulting Club**

The Consulting Club seeks to equip its members with resources to build a successful career in consulting. The club anchors these efforts by creating forums where participants can learn and imbibe skills and best practices from industry experts, and by spearheading initiatives that enable students to assimilate these learnings into practical applications.

## **Entrepreneurship and Venture Capital Club**

The Entrepreneurship and Venture Capital (EVC) Club fosters entrepreneurial thinking and works towards increasing the number of successful business ventures at ISB by institutionalising the entrepreneurial culture. The club enables the achievement of this goal by providing timely resources, relevant contacts and organising events like the venture capital investment competition, idea lab sessions, elevator pitches, business plan workshops and an entrepreneurship conclave based on the interest of the cohort for that year.

## **Finance Club**

The Finance Club works with its members to develop skill sets and capabilities to become successful finance professionals. The club organises speaker sessions with

# Professional Clubs at ISB

---

industry experts, technical workshops and finance conferences to create a platform for continuous learning. Artha, the flagship Finance Leadership summit of ISB is helmed by the finance Club. The club members come from diverse backgrounds including banking, trading, research, economics, insurance, operations, manufacturing and IT.

## **Energy Club**

One of the youngest clubs to become a member of Professional Clubs at ISB, they work with the mandate to prepare leaders for organisations in energy space including all its constituents. The club endeavours to work with its members to prepare thought leaders for the global energy industry.

## **Healthcare Club**

The Healthcare industry (pharmaceuticals, medical devices, hospitals, diagnostics, e-commerce and technology in healthcare) presents immense business opportunities and management challenges. The Healthcare Club at ISB aims to build awareness and knowledge of the industry by organising speaker sessions, onsite visits and a conclave on healthcare and related subjects. Members of the Healthcare Club come from diverse backgrounds including pharmaceuticals, medical devices, hospitals, consulting, operations and IT.

## **Manufacturing & Operations Club**

The Manufacturing and Operations Club focuses on strategy, project development, operations and supply chain management, optimisation and consulting in the manufacturing and allied sectors. In addition to providing a forum for discussion and

knowledge enhancement for students, the club also provides holistic opportunities to students to pursue professional interests and rewarding careers in the manufacturing and operations fields.

## **Marketing Club**

The team members of this club are some of the most motivated people on campus, bound together by a passion for the art and science of marketing. The club aims to sharpen the skills of the members, and act as a bridge between industry and the vast pool of marketing talent at ISB. Whether it is conventional roles in marketing, sales or branding to areas such as digital marketing, selling or distribution, the club organises sessions and workshops to equip students to ace their game.

## **Media and Entertainment Club**

The youngest Club at ISB aims to develop relationship with companies in the Media and Entertainment space and help its members develop an understanding of the opportunities available in the growing and changing industry. The club also aims to serve as a forum for its stakeholders, to exchange ideas and experiences, to facilitate enriched learning and career development opportunities.

## **Net Impact Club**

ISB's Net Impact Club was started to help future leaders use the power of business to make a difference to society. The club has conducted excellent programmes, such as ISB Global Pro-bono Consulting, iDiya - National Social Ideas Challenge, Board Fellows, Social Responsibility Conclave and ISB Responsible, with a special focus on development sector

---

careers. The club comes out with new offerings and an eclectic range of activities for its members every year.

### **Public Policy Club**

The club creates awareness about careers in public policy and disseminates knowledge about policy, economy, and government, providing a platform within ISB to nurture future business leaders in the public policy domain. Members come from diverse backgrounds including legal, insurance, not-for-profit, social-sector consulting and PSUs. The club organises talks and seminars that bring together Foundations, Government and quasi-Government bodies for a dialogue with ISB students.

### **Retail & Ecommerce Club**

The Retail sector promises to be one of the fastest growing in the years to come, and India is one of the largest retail destinations globally. ISB Retail Club aims to help its members forge a career in retailing by building salient platforms that provide the right skills and knowledge through interactions with the industry and academia.

### **Senior Executives Club**

The Senior Executive Club collectively brings together the most experienced individuals from the entire class of students at ISB. With individual experiences ranging from a minimum of eight years to 24 years, the club is truly representative of the rich diversity in industry and function that characterises ISB. We believe that this group of individuals is a prime example of “Leaders Ready to Excel.” By combining their in-depth industry know-

how with the rigorous training at ISB, these professionals are ready to take up leadership challenges offered by businesses. Companies have successfully recruited members of the Senior Executives Club for leadership positions across different industries and some of the alumni hold positions of prominence in their respective field.

### **Women in Business Club**

Women in Business is a student run professional club on campus that was established in 2010 with the aim of empowering the women student community and equipping them to better accomplish personal and professional goals. This year ISB has the highest ever percentage of women in the cohort – almost 41%. The Women in Business Club aims to empower women across India:

- By equipping them with the tools to succeed in the world of business through essential skill enhancement initiatives
- By giving them a strong resource pool for support and guidance through establishing a strong network with corporate organisations and women business leaders
- By ensuring that women lead across all levels of business through partnerships with many non-profit organisations or women social entrepreneurs for the social and economic upliftment of underprivileged women

# Co' 24 Clubs Data



No of Members



Avg Experience



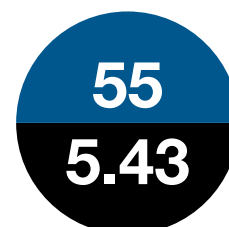
Business Analytics



Business and  
Technology



Consulting



Energy



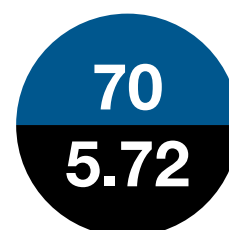
Entrepreneurship  
and Venture Capital



Finance



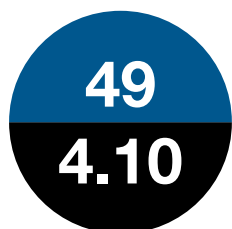
Healthcare



Manufacturing  
and Operations



Marketing



Media and  
Entertainment



Net Impact



Public Policy



Retail and  
E-Commerce



SEC



Women in  
Business





## Indian School of Business Hyderabad | Mohali

Hyderabad Campus: Gachibowli, Hyderabad - 500 111.

Mohali Campus: Knowledge City, Sector 81, SAS Nagar, Mohali - 140 306.

placements@isb.edu | +91 40 2300 7000

---

Corporate Identity Number: U80100TG1997NPL036631

---

### Founding Associate Schools

---



### Associate Schools

---



### Accreditations

---

