



MBA

MASTER OF BUSINESS ADMINISTRATION

2023
EMPLOYMENT
REPORT



MENDOZA COLLEGE
OF BUSINESS



THE NOTRE DAME MBA 2023 EMPLOYMENT REPORT

JOHN ROONEY

Senior Director,
Graduate Business Career Development
& Alumni Relations



"The Career Development team is pleased to report another year of strong career outcomes. Our students continue to demonstrate why many of the world's top companies come to Notre Dame to access our unique blend of talent and leadership. I want to thank our corporate partners and dedicated alumni that were instrumental in helping our students. Finally, my thanks to the dedicated Career Development team for the support they give our students and employers every day."

CLASS OF 2023

91%

JOBS OFFERED
BY 3 MONTHS
AFTER GRADUATION

90%

JOBS ACCEPTED
BY 3 MONTHS
AFTER GRADUATION

\$172,098

MEAN SALARY
PLUS BONUS

\$165,000

MEDIAN SALARY
PLUS BONUS

INVESTMENT BANKING

\$225K

MEDIAN SALARY
PLUS BONUS

STRATEGY CONSULTING

\$215K

MEDIAN SALARY
PLUS BONUS

TECHNOLOGY

\$165.5K

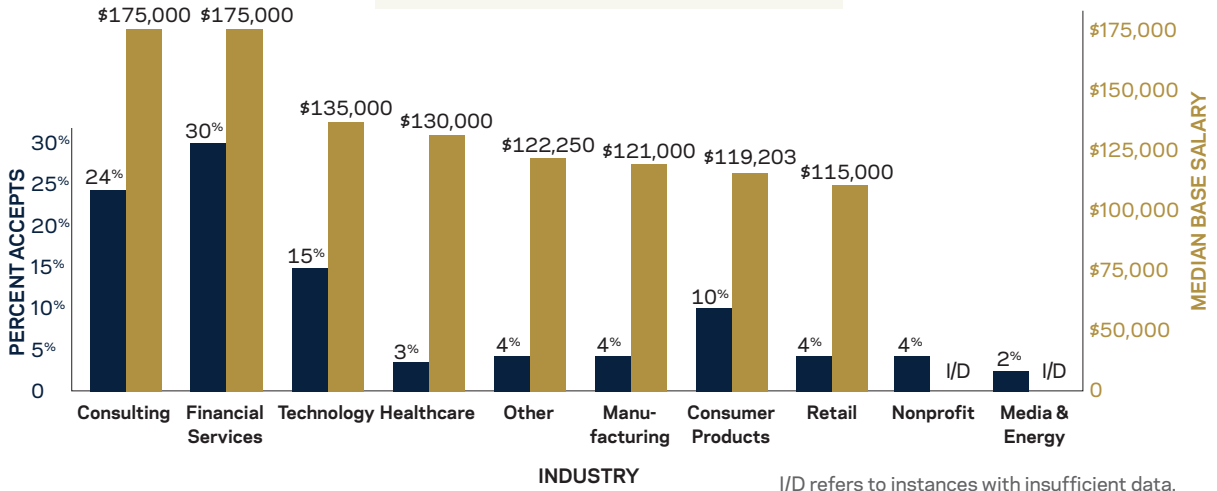
MEDIAN SALARY
PLUS BONUS

GROW THE GOOD IN BUSINESS™

\$130K MEDIAN
BASE SALARY

\$35K MEDIAN
BONUS → **17%** INCREASE OVER
2022 MEDIAN BONUS

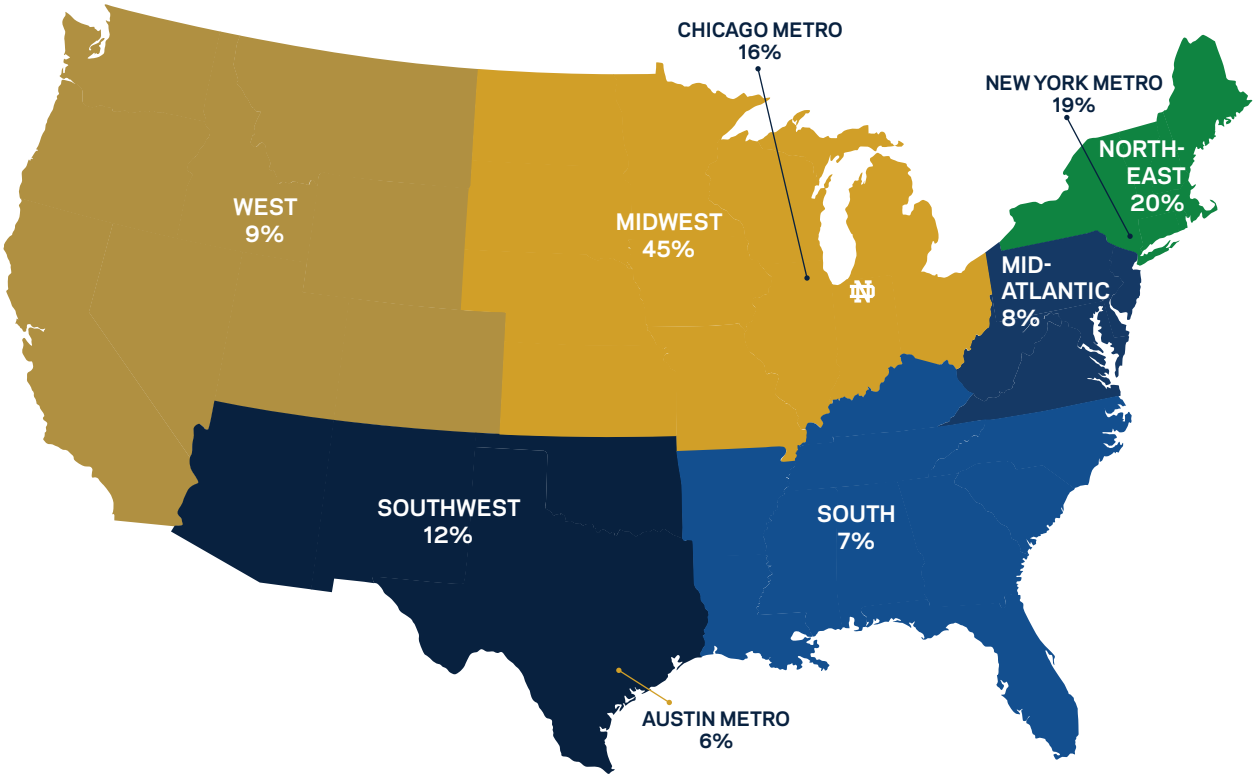
COMPENSATION BY INDUSTRY



COMPENSATION BY FUNCTION

FUNCTION	PERCENT ACCEPTS	MEDIAN BASE SALARY
CONSULTING	29.9%	\$175,000
Strategy/Management	16.8%	\$175,000
Advisory	5.6%	\$147,500
Internal	3.7%	\$125,040
IT	1.9%	I/D
HR	1.9%	I/D
FINANCE/ACCOUNTING	36.4%	\$135,000
Investment Banking	17.8%	\$175,000
Corporate Finance/Treasury	3.7%	\$122,500
Corporate Finance/Financial Analysis	11.2%	\$121,500
Investment Management	1.9%	I/D
Other	1.8%	I/D
GENERAL MANAGEMENT	5.6%	\$125,000
OPERATIONS/LOGISTICS	8.4%	\$121,500
General Management	2.8%	\$142,800
Production	2.8%	\$120,000
Logistics	2.8%	\$115,000
MARKETING/SALES	10.3%	\$120,000
Product Management	3.7%	\$130,000
Brand Management	1.9%	I/D
Sales	1.9%	I/D
Retail	1.9%	I/D
Other	0.9%	I/D
OTHER	9.3%	\$92,300

FULL-TIME EMPLOYMENT BY REGION AND METRO AREA



<p>REGION</p> <hr/> <p>MIDWEST Chicago, Minneapolis, Cincinnati, Detroit</p> <hr/> <p>WEST Los Angeles, San Jose, Seattle</p> <hr/> <p>NORTHEAST New York</p>	<p>REGION</p> <hr/> <p>MID-ATLANTIC Washington, Philadelphia</p> <hr/> <p>SOUTH Atlanta, Charlotte</p> <hr/> <p>SOUTHWEST Austin, Dallas, Houston</p>
---	---



VERLINDA ATTIPOE

Two-Year MBA
Class of 2023
Associate,
McKinsey & Company

“My recruitment success at ND can be attributed to the strong alumni network and exceptional career support. In navigating the complex world of consulting recruitment, I found that connecting with Notre Dame alumni (undergraduate & graduate) was extremely helpful and was inspiring to witness their unwavering commitment to helping me flourish. The guidance and mentorship offered by the career development team also helped hone my storytelling skills and provided me with invaluable resources such as the opportunity to interview with an ex-McKinsey consultant. This experience provided me with invaluable insights and a deeper understanding of how to go about my case interviews.”

TOP EMPLOYERS

amazon

Deloitte.

EY Parthenon

Google

JPMORGAN
CHASE & CO.

pwc

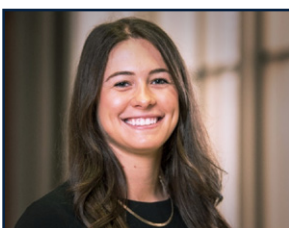
TRUIST 

ALL EMPLOYERS

Advantage Solutions
Amazon
Amazon Web Services (AWS)
American Airlines
Air Products
AT&T
Autodesk
Baird
Barclays
BCG
BlackRock
BMO Capital Markets
Boeing
Chewy
Citi
Cognizant
Deloitte Corporate Finance
eBay
Ecolab
Elevance Health
Eli Lilly & Company
EY
EY Parthenon

Ferrero Group
Fiserv
Ford Motor Company
Gartner
General Motors
Goldman Sachs
Google
Guggenheim Partners
Harris Williams & Co.
Hatch
IBM
IQVIA
Jefferies
JPMorgan Chase & Co.
JSC Impact
Kellogg Co.
Kohl's
Alan B Lancz and Associates
LEK Consulting
Lincoln International
Mattel
McKinsey & Company
Medtronic

NextEra Energy
PPG
Principal Financial Group
Procter & Gamble
Pulte Institute for
Global Development
PwC
RWE Renewables
SEI Consulting
SLKone, LLC
South Bend Community Schools
Tesla
The Walt Disney Company
Tire Rack
TriNet Group
Truist
UBS
United Airlines
University of Notre Dame
Walmart
Wells Fargo
Whirlpool Corporation

**NICOLE GARDINI**

Two-Year MBA
Class of 2023
Investment Banking Associate,
Guggenheim Partners

“Support from the MBA Finance & Investments club was a key factor in securing an internship and subsequent full-time position in investment banking. Club mentors and leadership helped me navigate the complex and sometimes intense process of recruiting in the banking industry. In addition to their guidance, connecting with and receiving insights from Notre Dame alumni in the industry prepared me to be a competitive candidate for the role.”

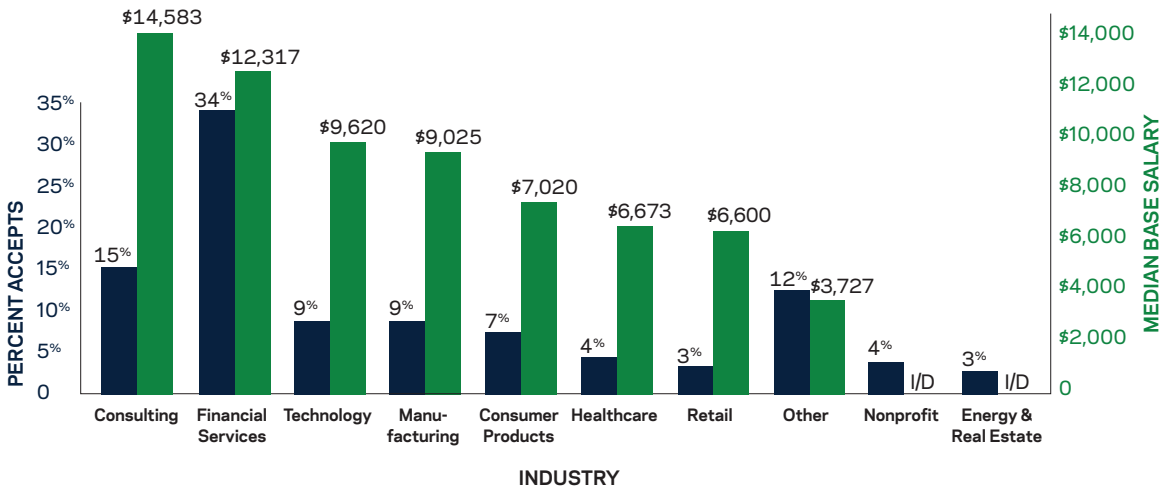
100%

JOB ACCEPTS

\$9.3K

MEDIAN BASE SALARY PER MONTH

COMPENSATION BY INDUSTRY



I/D refers to instances with insufficient data.

COMPENSATION BY FUNCTION

FUNCTION	PERCENT ACCEPTS	MEDIAN MONTHLY SALARY
CONSULTING	25.0%	\$12,083
FINANCE/ACCOUNTING	37.0%	\$12,067
OTHER	7.6%	\$7,713
GENERAL MANAGEMENT	5.4%	\$7,292
MARKETING/SALES	14.1%	\$7,183
OPERATIONS/LOGISTICS	8.7%	\$6,587
HUMAN RESOURCES	2.2%	I/D

I/D refers to instances with insufficient data.

TOP EMPLOYERS



GUGGENHEIM



JPMORGAN
CHASE & CO.



Western & Southern
Financial Group®

ALL EMPLOYERS

Abbott Nutrition
Adapta Education Inc.
Adaptive Business Solutions, LLC
AdventHealth
AEBetancourt
Aguafria
Air Products
AlixPartners
Amazon
Analysis Group
Apple
Bain & Company
Baird
Bank of America
Barilla
Barry-Wehmiller
Bijora Inc.
Boeing
Caterpillar
Chenmark Capital Management, LLC
Chewy
Citibank
ClubVMSA
Cornhusker Capital
Credit Suisse
Crowe Horwath LLP
Delek US
Deloitte Corporate Finance
DICK's Sporting Goods

Discover Financial Services
Dow Chemical Company
Ecolab
Elevance Health
EY
Factory LLC
Fiserv
Ford Motor Company
GE Aviation
Goldman Sachs
Google
Guggenheim Partners
Guidehouse
HEB
Hershey Company
Hyland
IBM
IDEA Center at the
University of Notre Dame
International Finance Corporation - IFC
Intrepid Phoenix Ventures
JC consulting
JPMorgan Chase & Co.
Kellogg Co.
Landmark Wealth Management Group
LatinUs Beauty
Microsoft
MTS Health Partners LP
NextGen Growth Partners

Penta Holdings, Inc.
PepsiCo
Piper Sandler
Procter & Gamble
PwC
Rialto Capital
Rothschild
Santander Bank
Siemens
Silverpeak
Sintokogio
Southwest Airlines
Stellantis
Techstars
The House of Lords
The Opus Group
Thermo Fisher Scientific
Three Leaf Development
Truist
Underwriters Laboratories Inc.
United Rentals
University of Notre Dame
US Soccer Federation
Western & Southern Financial Group
Western Alliance Bank
Whirlpool Corporation
Wilson Sporting Goods
Zebra Technologies



ANDREW SARAF

Two Year MBA,
Class of 2024
MBA Intern,
Chase Associate Program
JPMorgan Chase

“The ND Alumni network rounded out my MBA experience by providing an unparalleled sense of support and mentorship during my career pivot from Commercial Banking to Technology. From newly minted MBAs all the way to C-Suite leadership, the ND alumni network not only prepared me to excel in my interviews, but also gave me invaluable mentorship for my career to come. They shed light on how to turn myself from just a worker into an exceptional servant leader in a major company.”



CONTACT US

Email: mba.business@nd.edu

(574) 631-8488

mendoza.nd.edu

MENDOZA COLLEGE
OF BUSINESS



AACSB
International
Accredited