



Rotman School of Management  
UNIVERSITY OF TORONTO

**Rotman  
Career Services**

---

# **Full-Time MBA Employment and Salary Report**

**2021-2022**

## Contents

Director's Message	1
Full-Time MBA Employment	3
Full-Time MBA Internships	6
Companies Hiring at Rotman	9
Connect with Rotman Career Services	13

## Director's Message



**Lyla Korhani**

Director, Career Services  
Rotman School of Management

This past year has been a period of challenge and renewed optimism, and once again, the Rotman community has drawn together to do what we do best: to innovate, to move faster, to constantly sharpen our relevance – to excel even as we set a higher standard.

At Rotman Career Services, we are proud of our work in matching our talented students and graduates with employers who expect the best, and whose needs continue to evolve and grow. Even in these unusual times, we have enjoyed unprecedented employment outcomes – a testament to the strength of the graduates themselves and the quality of the education they have received, as well as to our own team's ability to continually improve how we deliver our services.

In the past two years, our staff seamlessly transitioned to online service delivery, and our career support intensified. We launched a LinkedIn campaign highlighting our 2020 graduates across all programs. We delivered alumni coffee chats, lunch and learns and industry roundtables. We expanded our job leads beyond traditional career paths and shifted focus to emerging industries. We helped our students to network virtually and adopt online job search strategies. And we continued to deliver top service to our corporate partners.

The results speak for themselves: we are excited to announce that in the 2021-22 academic year, 97 percent of our Full-Time MBA graduates secured employment within six months of graduation. In the coming year we hope to build on our track record of success in delivering career transformation for our graduates. We are proud of our achievements, and of our contributions to strengthening the status of Rotman as a top-ranked business school with an impeccable reputation and global brand.

As global markets continue to evolve, so will our efforts to deliver the talent that employers need. We are excited to expand our corporate partnerships into international markets, developing new and innovative initiatives to prepare our students for careers in a rapidly-changing global economy.

To learn more about some of our other programs, including our Master of Management Analytics (MMA) and Master of Financial Risk Management (MFRM) programs, I encourage you to browse through our MMA / MFRM Employment & Salary Reports as well as our Recruitment Guide which offers more details on our eight graduate level programs and profiles of our remarkable students and graduates.

Sincerely,

**Lyla Korhani**

Director, Career Services  
Rotman School of Management

---

# Full-Time MBA Class of 2021 Profile

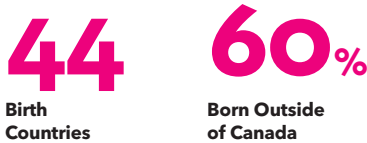
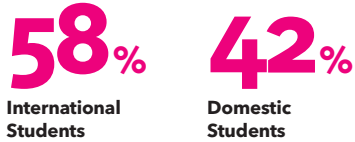
Class profile data is based on the incoming class of 2021 as of 2019



## ACADEMICS



## GLOBAL REACH



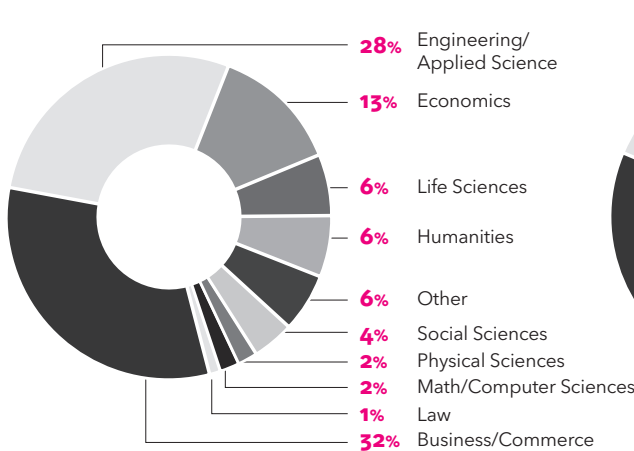
## JOINT DEGREE



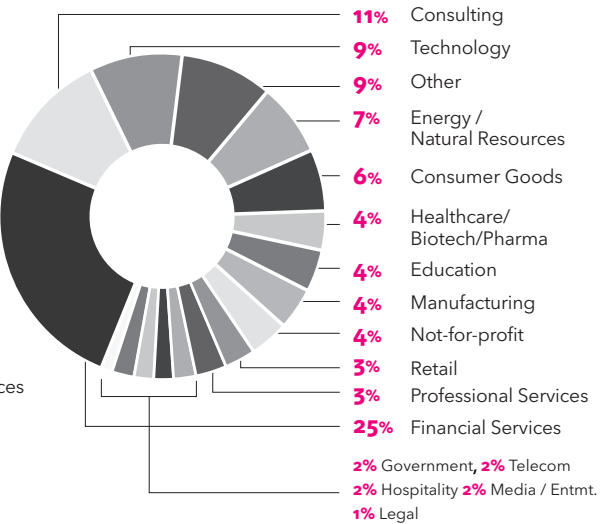
## FELLOWS



## ACADEMIC BACKGROUND



## INDUSTRY BACKGROUND



# Full-Time MBA Employment Class of 2021

## Full-Time Employment Salaries (CAD)

Average Total Salary (inclusive of base, bonus, and other compensation)	<b>\$123,438</b>
Average Base Salary	<b>\$104,622</b>
Median Base Salary	<b>\$92,000</b>
<i>Salary data based on 79% of employed students who reported salary information.</i>	
Average Signing Bonus	<b>\$18,291</b>
Median Signing Bonus	<b>\$12,500</b>

*26% of employed students who reported salary information received signing bonuses.*

## Full-Time MBA Employment Rates

# 96%

of Full-Time MBA students seeking employment were employed **3 months after graduation**

# 97%

of Full-Time MBA students seeking employment were employed **6 months after graduation**

## FULL-TIME MBA EMPLOYMENT SALARIES BY INDUSTRY (CAD)

Industry	% Employed	Average	Range 25th percentile	Range 75th percentile
Financial Services	31.7%	\$97,236	\$80,000	\$100,000
Consulting	24.4%	\$113,694	\$90,000	\$128,750
Technology	11.2%	\$102,803	\$84,000	\$119,500
Other	10.2%	\$101,067	\$80,000	\$119,000
Legal Services	9.8%	\$131,816	\$88,400	\$199,830
CPG & Retail	5.9%	\$95,733	\$78,450	\$96,000
Healthcare	4.9%	\$86,538	\$80,844	\$85,750
Real Estate	2.0%	\$76,250	\$76,250	\$80,000

## FULL-TIME MBA EMPLOYMENT SALARIES BY FUNCTION

Function	% Employed	Average	Range 25th percentile	Range 75th percentile
Accounting/Finance	24.9%	\$101,497	\$80,000	\$112,500
Strategy	21.5%	\$116,048	\$90,000	\$140,000
Other	16.1%	\$95,370	\$78,000	\$98,420
Marketing/Sales	14.1%	\$96,416	\$80,000	\$103,000
Legal Services	9.8%	\$131,816	\$88,400	\$199,830
Operations	6.8%	\$96,314	\$76,250	\$116,250
General Management	5.4%	\$87,909	\$83,000	\$90,500
Business Design	1.5%	\$90,000	\$85,000	\$95,000

**"The Canadian health care system is a unique and complex environment, and the Rotman School clearly prepares its students to appreciate the regulatory and operational challenges involved in the project.**

**The thoughtful analysis and clear recommendations provided by our Rotman School intern set a framework for action that will inform our hospital's long-term care strategy over the coming years. I was particularly impressed with how an international student with impressive credentials in the engineering and mining industry could so quickly bring value to our organization."**

**Rob Crawford**

Director of Strategy & Analytics  
North York General Hospital

# Full-Time MBA Class of 2022 Profile

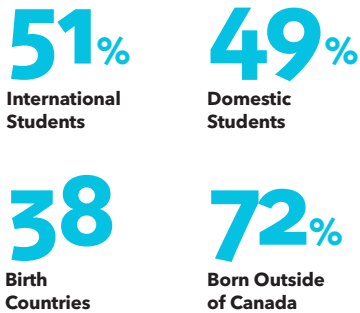
Class profile data is based on the incoming class of 2022 as of 2020



## ACADEMICS



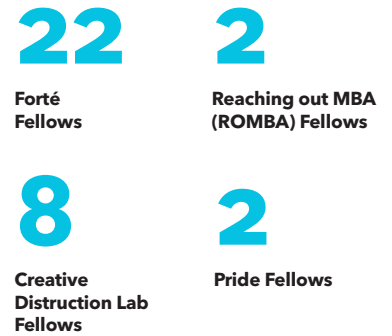
## GLOBAL REACH



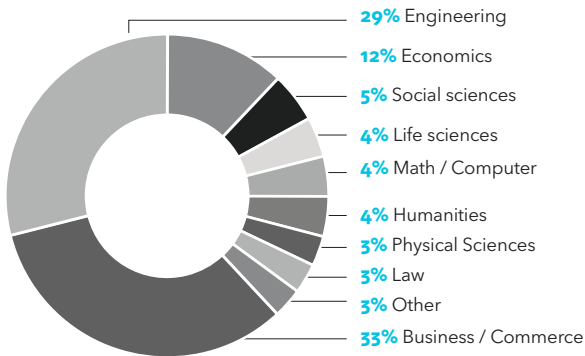
## JOINT DEGREE



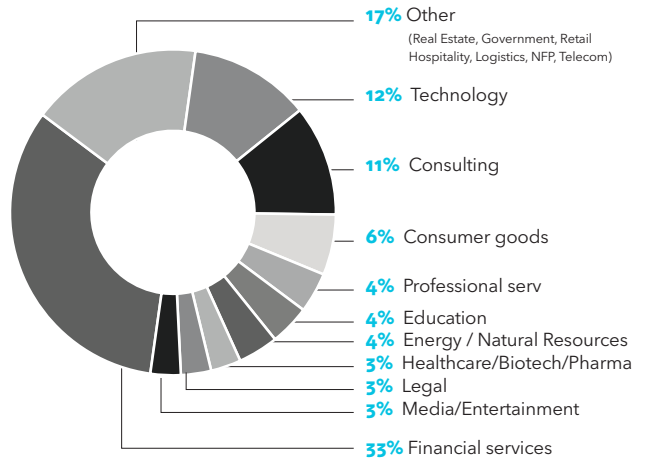
## FELLOWS



## ACADEMIC BACKGROUND



## INDUSTRY BACKGROUND



# Full-Time MBA Internships Class of 2022

## Full-Time Internship Salaries (CAD)

Average Monthly Salary (inclusive of base, bonus, and other compensation)	<b>\$5,754</b>
Average Monthly Salary	<b>\$5,500</b>
Median Monthly Salary	<b>\$4,863</b>

Salary data based on 76% of employed students who reported salary information.

## Full-Time MBA Internship Rates

**97%** of Full-Time MBA students secured internships

**"Rotman produces internship candidates who are well equipped for the workplace in a large economic hub city like Toronto. They are professional, technically sound and possess the right set of soft skills to succeed in the workplace. The Rotman Career Services office is great to deal with. They closely understand the employer needs and efficiently align with our hiring requirements. They respond with lightning speed and always have a solution."**

### Greg Coelho

Senior Advisor, Ministry of Economic Development, Job Creation and Trade Innovation Strategy and Programs Branch

## FULL-TIME MBA INTERNSHIP SALARIES BY INDUSTRY (CAD)

Industry	% Employed	Average	Range 25th percentile	Range 75th percentile
Financial Services	42%	\$5,444	\$4,078	\$5,833
Consulting	13%	\$9,310	\$4,408	\$13,763
Healthcare	11%	\$3,539	\$3,025	\$4,025
CPG & Retail	6%	\$5,638	\$4,850	\$5,725
Government	6%	\$3,159	\$2,558	\$3,600
Technology	6%	\$5,845	\$4,635	\$7,000
Other	4%	\$4,669	\$3,469	\$4,908
Entrepreneurship	3%	\$4,163	\$3,880	\$4,725
Real Estate	3%	\$4,333	\$4,050	\$4,850
Energy & NR	2%	\$5,049	\$4,343	\$5,868
Non-Profit	2%	\$4,100	\$2,750	\$4,900

## FULL-TIME MBA INTERNSHIP SALARIES BY FUNCTION

Function	% Employed	Average	Range 25th percentile	Range 75th percentile
Accounting/Finance	33%	\$5,528	\$4,069	\$5,959
Marketing/Sales	22%	\$4,706	\$3,539	\$5,185
Other	21%	\$4,810	\$3,075	\$5,560
Strategy	15%	\$8,041	\$4,250	\$12,750
General Management	5%	\$4,602	\$3,200	\$5,440
Business Design	2%	\$3,752	\$3,563	\$4,067
Operations	2%	\$5,569	\$3,900	\$6,795



% OF SCHOOL VS STUDENT FACILITATED INTERNSHIPS



"Our team at Avasta has grown through the exceptional talent that we have found as interns and full-time hires at Rotman. We have had success in the expertise and enthusiasm of our interns with our own organization's unique and proprietary alternative approach to traditional management consulting. The teaching staff at Rotman have cultivated in their students the forward-looking mindset required in today's business environment. We are proud to have welcomed four Rotman graduates as part of our permanent team in less than two years and are excited for our upcoming interns and future hires."

**Edgar Baum**  
CEO & Founder, Avasta Inc.

"For many years now, Rotman has remained a supportive partner and a steadfast and reliable source of exceptional talent at Bain. Not only are Rotman students highly professional and prepared throughout their recruiting journey, but they are friendly, down-to-earth, and encompass a breadth of diverse skills and attributes that translate to phenomenal Bain consultants. We count ourselves lucky to have so many Rotman alumni at Bain, and each year, we look forward to partnering with Rotman and meeting the next amazing class."

**Carly Hysenaj**  
Senior Specialist, Consultant Recruiting, Bain & Company



# Industry Partnerships

**For our corporate partners, our Industry Engagement team of seven are dedicated to help you meet your most pressing HR challenges, while developing a robust talent pipeline that will serve your needs in the future. We bring deep knowledge of key sectors and industries in Canada and internationally including:**

- Canadian Banks
- Consulting
- Consumer Packaged Goods
- Credit Cards
- Global Energy, Oil & Gas and Mining
- Global Financial Services & FinTech
- Global Real Estate & Infrastructure
- Government
- Healthcare, Pharmaceutical and Life Sciences
- Media
- Not-for-Profit
- Payments
- Sports and Entertainment
- Startups
- Technology
- Transportation and Logistics

**As we're constantly broadening our horizons as the career landscape evolves, we encourage you to reach out to us and discover how the Rotman School at the University of Toronto, with its top-tier reputation and location close to the city's business core, is ideally positioned to provide you with the talent you need to drive your organization forward.**

**"My transition from the education and non-profit world to my current role as a strategy consultant was made possible by the holistic approach to career development offered by the Rotman School. The contributions of the dedicated professors, peers and friends, the accomplished and helpful career centre staff, and the supportive alumni community, whose members are always available to share their perspectives and facilitate the right conversations all defined my journey. With their support, I was able to not only land an amazing new position, but transform my professional identity, making an impact at work and in the broader community."**

**Hillel Bierbrier** (MBA '18)  
Senior Associate, Strategy&

<b>#</b>		
5&Vine		
<b>A</b>		
Abbott	Bloom Burton Securities Inc.	Cineplex Entertainment LP
Abbott Medical Canada	Bloom Venture Partners	Circe Bioscience
Able Innovations Inc.	Bloomberg LP	Cisco
Accenture Inc. (Canada)	BlueRock Logistics - Canada	Citi (Canada)
Access to Success	BMO	Citi Bank
Achievers	BNP Paribas	Citi Global Markets - Asia Pacific
Actis Private Equity	Bombardier	Citrine Informatics
Ada	Bond Brand Loyalty	Clairvest Group Inc.
Adaptovate	Boston Consulting Group (Canada)	Clariti
Adidas Group	Boyden	Clarity
ADP	Brainmaven	Clearco
AECOM	Brendan Wood International	Cleveland Clinic Canada
AGF Investments	Bridgeable	Clk2Pay
Agnostiq	BridgeME	Clio
Akzent Group	British Columbia Investment Management Corporation (BCI)	CMLS Financial Ltd.
Algonquin Power & Utilities Corp.	Brompton Funds Limited	CN Rail
Alio	Brookfield Asset Management	Coactuate
AlixPartners, LLP	Brookfield Properties	Coinsquare Capital Markets
Alpha Square Group	BuildOps	Colgate-Palmolive Asia Pacific Limited
Alphavima Technologies	Burgundy Asset Management Ltd.	ComplianceQuest Inc.
Alteris Consulting	Business Design Initiative	Constellation Software
Altis Labs	BuyProperly: Online marketplace for fractional real estate property investments	Convergence
Altree Developments	Bytedance	Cosmos Sports & Entertainment
Amazon		Cota
AMD	<b>C</b>	crawfordconnect
Anheuser-Busch InBev	C.D. Howe Institute	Crawley MacKewn Brush LLP
Apex Mobile Media	Caddy	CreateTO
Apotex	Calligo	Creative Destruction Lab
Appficiency	Cambridge Memorial Hospital (CMH)	Credicorp
Apple	Campbell Company of Canada	Credit Suisse
Aritzia	Canaccord Genuity Corp.	Crestpoint Real Estate Investments Ltd-Part of CC&L Financial Group
Arterra Wines Canada	Canada Goose	Cubert
Ascend	Canada Goose Arctic Program	Cutfield Freeman & Co Ltd.
Ascend Analytics	Canada Infrastructure Bank (CIB)	Cyclica Inc.
AstraZeneca International	Canada Life	<b>D</b>
AT&T	Canada Mortgage and Housing Corporation (CMHC)	D2L
Atrium Mortgage Investment Corporation-	Canada Pension Plan Investment Board (CPPIB)	Daggerwing Group
Canadian Mortgage Capital Corporation	Canada Post	Danaher Corporation
Autodesk	Canada's National Observer	Dashlane
Avanade	Canadian Tire Corporation Ltd.	Dassault Systemes
Avasta Incorporated	CanDeal Markets	Datanaya
Avro Life Science	CanFirst Capital Management	Datto
<b>B</b>	Canso Investment Counsel Ltd.	Davies Ward Phillips & Vineberg LLP
Bain & Company (Canada)	Canvass AI	DBRS Limited - Canada
Bank of America	Capital Developments	DBRS Morningstar
Bank of Canada	Capital Methods	Debut Group
Bank of Montreal Financial Group	Capital One (Canada)	Deliverr
BARCLAYS	Cardata	Deloitte (Canada)
Bay Mills Investment Group and The Bay Mills Diversity Fund	Care & Family Health	Desjardins Capital Markets
Bayer Inc.	CARE Canada	Desjardins General Insurance Group
BDO Canada LLP	Carlsberg Canada	Desjardins Securities Inc. (Part Of Desjardins Group Of Companies)
Bell	CBRE	DiDi
BenchSci	CBRE Global Workplace Solutions (GWS)	DIDI Global
Best Buy Canada	CBRE Investment Management	DOM Sports and Games
BetterUp	CDSPI	DoorDash
BetterVet	Celestica	Drone Delivery Canada
BetterVU	Central 1	<b>E</b>
Betterware	Centre for Commercialization of Regenerative Medicine (CCRM)	eBay
Bionic Power Inc.	CentreCourt Developments Inc.	ecobee
BioSteel - Sports Drink and Sports Nutrition Company	Ceridian	Economical Insurance
Birch Hill Equity Partners Management Inc.	CGI Inc	Edelman
BitMEX	Chewy	Edenshaw Developments Limited
Black Boys Code	Chrysalix Venture Capital	Eight Capital
BlackBerry	Church & Dwight Co., Inc.	eLeapPower
Blair Franklin Capital Partners	CIBC	Electric Avenue
Blake, Cassels & Graydon	CIBC Simplii Financial	Electronic Arts
	Cidel Asset Management Inc.	Eli Lilly
	Cigna	Eli Lilly Asia, Inc.
		EllisDon Corporation

Emma - The Sleep Company  
 Environmental Defense Fund  
 Ernst & Young  
 eSight Eyewear  
 Evenset Inc.  
 Everest Group  
 Export Development Canada (EDC)  
 Express Scripts Canada  
 Extencicare  
 ExxonMobil

**F**

F. Hoffmann-La Roche  
 Facet Skincare  
 Fasken  
 FAX Capital Corp. (FAX)  
 FendX Technologies Inc.  
 Fidelity Investments Canada ULC  
 Fiera Capital Corporation  
 Fiix Software  
 FIS Global  
 Fitch Ratings  
 Flipp  
 Foodiepages  
 Forthlane Partners  
 Four Seasons Hotels and Resorts (Canada)  
 Framework Venture Partners  
 Freed Developments  
 Freely Parking  
 Freshii  
 FullG Capital  
 FundThrough Inc.  
 Fusion Analytics  
 FutureSight Ventures

**G**

GALE Partners LP  
 Gartner  
 Gatik  
 GE Healthcare  
 Gemic  
 General Mills Canada Corporation  
 George Brown College  
 Georgian  
 Geotab  
 Gilead Sciences Canada Inc.  
 Glen Dimplex Americas  
 Global Alpha Capital (Connor, Clark & Lunn Financial Group)  
 Global Cargo Systems  
 Global Performance Improvements Inc.  
 Global Risk Institute in Financial Services (GRI)  
 Global Skills Hub  
 Google  
 Government of Canada  
 Grace Hill  
 Gradient Robotics  
 Grasshopper Solar  
 Graywood  
 GreenSky Capital, Inc.  
 Greybrook Realty Partners Inc.  
 Guardian Capital Group Limited  
 GWN Holdings Ltd.

**H**

Halmyre  
 Hatch Consulting  
 Health Hub Solutions  
 Healthcare Excellence Canada  
 HealthHub  
 HelloFresh  
 HelloFresh Canada

Henkel Canada Corporation  
 Hewlett-Packard Enterprises  
 Hines  
 HLS Therapeutics Inc  
 Hockeystick.co Inc.  
 Home and Community Care Support Services Central  
 Home Depot (Canada)  
 HomeEquity Bank  
 Homestars  
 HOOPP | Healthcare of Ontario Pension Plan  
 Hootsuite  
 Horizon  
 Horizon Robotics  
 HP Inc.  
 HSBC  
 Huatai Securities Co. Ltd  
 Hudson's Bay Company  
 Humi  
 Hyundai Canada

**I**

IBM  
 ICF  
 ICON TALENT PARTNERS & THE CVCA-BIPOC-Private Equity and Venture Capital  
 IMCO-Investment Management Corporation of Ontario  
 Impact Consulting Group  
 Imperial Oil (Canada)  
 Imperial Tobacco Canada  
 In Nova Consulting Inc.  
 Indie Travel  
 Information Venture Partners  
 Infrastructure Ontario  
 Ingram Micro  
 Innomar Strategies Inc.  
 Instacart  
 Institute for Advancements in Mental Health  
 Intact Financial Corporation  
 integrate.ai  
 Intentional Capital  
 Interac  
 International Finance Corporation (IFC)  
 Intuit Inc.  
 Intuitive AI  
 Invesco Indexing, LLC  
 Ipsen  
 IQVIA

**J**

J17 Capital  
 Jeffries  
 JLL  
 Johnson & Johnson Family of Companies (Canada)  
 Joyride  
 JP Morgan Chase  
 JTE Claims Consultants LTD.

**K**

Kaizco  
 Kearney (Canada)  
 Keller Williams Legacies Realty, Brokerage-AVENUE REALTY INC. TEAM  
 Kensington Health  
 KeyData Associates Inc.  
 KeyOps  
 Kinaxis  
 Kinnd  
 Klick Health  
 Konrad Group  
 Koru

KPMG

**L**

Labatt Breweries - Anheuser-Busch InBev  
 Laurentian Bank Financial Group  
 Ledcor Group  
 Letko, Brosseau & Associates Inc.  
 Level  
 LEVEL5 Strategy Group  
 Levelwear  
 Levitt-Safety  
 Liberty Power  
 LinkedIn  
 Linwood Custom Homes  
 Lionsgate Entertainment  
 Live Nation Entertainment  
 LlamaZOO Interactive Inc.  
 Loblaw Companies Ltd.  
 Loopio  
 L'Oréal  
 LoyaltyOne Inc.  
 LUCID  
 Lynk Global

**M**

Mackenzie Investments  
 Made of Millions  
 Magna International  
 Manulife Financial  
 Maple  
 Maple Leaf Foods Inc.  
 Marcatus QED  
 MaRS Discovery District  
 Masco Canada Ltd  
 Massive Insights  
 MasterCard  
 Mattamy Homes  
 Mavennet  
 Mawer Investment Management Ltd.  
 Mayo Clinic  
 McCain Foods Limited  
 McCarthy School Uniforms Inc.  
 McDonald's Restaurants of Canada  
 McKesson Canada  
 McKinsey & Company (Canada)  
 Medcan Clinic  
 Medical Esthetics School of Quebec/École Esthétique Médicale du Québec - Cours & Formation  
 Mercado Libre  
 Meridian Credit Union Ltd.  
 Meridian Global Inc.  
 Meta  
 Metro Supply Chain Group  
 Metrolinx  
 Michael Garron Hospital  
 Microsoft  
 Mindray North America  
 MiningFeeds.com  
 Ministry of Children, Community and Social Services  
 Ministry of Health and Long-Term Care  
 Misfits Global  
 Mitsio Motu  
 MKTG Sports & Entertainment  
 MLSE (Maple Leaf Sports & Entertainment)  
 Moderna Canada  
 Molson Coors Canada  
 Moneris  
 Morgan Stanley  
 Morrison Financial Services Limited  
 MUFG Bank Canada-Mitsubishi UFG  
 Munich Re Canada

Munvo  
Myplanet

**N**

National Bank Financial Inc. (NBF)  
National Research Council Canada  
Natural Resources Canada  
Nestlé China Ltd.  
New Power Labs (NPL)-Backed By Marigold  
Capital  
Nexans North America  
NeXus Consulting Group  
Ninepoint Partners LP  
Normative  
North York General Hospital  
Northleaf Capital Partners  
Nous Group  
Novacap  
Novo Nordisk  
Novocol Pharma  
NOVOCOL PHARMA  
Nylas

**O**

O3 Mining  
ODAIA Intelligence  
Office of the Superintendent of Financial  
Institutions (OSFI)  
Ogilvy Health  
Oikocredit Canada  
Oliver Wyman  
Olli Brands Inc  
OMERS  
OMERS-OXFORD DEVELOPMENTS  
Omlove  
Omni Super App  
Ontario Bioscience Innovation Organization  
(OBIO)  
Ontario Court of Appeal  
Ontario Government  
Ontario Health  
Ontario Lottery and Gaming Corporation  
Ontario MD  
Ontario Ministry of Economic Development,  
Job Creation and Trade  
Ontario Ministry of the Attorney General  
Ontario Power Generation Inc. (OPG)  
Ontario Public Service (Treasury Board  
Secretariat)  
Ontario Securities Commission (OSC)  
Ontario Teachers' Pension Plan (OTPP)  
Onyx Initiative  
OP Trust  
OpenText  
Oppo Mobile Telecommunications Corp.,  
Ltd  
OPTIMUS SBR  
Oracle  
Organigram Inc.  
Origin Merchant Partners  
Orrick, Herrington & Sutcliffe LLP  
Osler, Hoskin & Harcourt LLP  
Outlier Ventures  
OverActive Media Group  
Oxford Properties Group

**P**

PagerDuty  
Panasonic  
Paradigm Capital Inc.  
Path  
PatrnerOne  
Paul Hastings LLP

Paul Weiss  
PayBright  
Payments Canada  
Penfield.AI  
Peoples Trust, Part of Peoples Group  
PepsiCo APAC  
PepsiCo Canada  
Percy Ellis  
Peytec Inc.  
PhenoTips  
Picton Mahoney Asset Management  
PIMCO-Pacific Investment Management  
Company LLC  
Pinterest  
Pixel Dreams  
PK  
PK Global  
Platform Group  
PointClickCare  
Poppy  
Portag3 Ventures  
Portland Holdings  
Powerex  
Prescient Private Fund Management  
PricewaterhouseCoopers LLP (Canada)  
Pricing Solutions  
Procter & Gamble  
Prodigy Ventures Inc.  
Promise Robotics  
Prosper Canada  
PSP Investments-Public Sector Pension  
Investment Board  
PureFacts Financial Solutions  
Purpose Financial  
PwC

**Q**

Q4 Inc.  
Qianjin Network Information Technology  
(Shanghai) Co., Ltd.  
QuadReal Property Group  
Questrade  
Quinn & Partners Inc.

**R**

Rally Assets  
Raymond James Ltd.  
RB Canada  
RBC  
Reach Platform  
Real Food for Real Kids  
Realstar Management  
Recipe Unlimited Corporation  
Reddit Inc.  
Reed Group  
Regen Capital  
Relay Ventures  
RENEW LLC  
RentMoola  
Republic Developments Inc.  
Restaurant Brands International  
Revenue Management Labs  
Rhenti  
Rhenus Logistics Canada  
Richter Real Estate Advisory  
Right to Play International  
Riskfuel  
Rogers  
Rosedale International Education  
Ruh

**S**

Saint Elizabeth Healthcare

SalesChoice  
Salesforce  
Sanofi Pasteur  
SAP  
SAP Pioneer  
Sapling Financial Consultants  
Sarana Asset Management  
SAS  
Satov Consultants  
Savormetrics  
SBQuantum  
Scotiabank  
ScottMadden, Inc.  
SE HealthCare  
SeamlessMD  
Setter Capital Inc.  
Shanghai Disney Resort  
Shanghai Pharmaceuticals Holding Co., Ltd.  
Sharp Electronics of Canada Ltd.  
Shaw Communications  
Shawcor Ltd  
Shelborne Capital  
Shift Health  
Shinhan Bank Canada  
Shiphrah Biomedical Inc.  
Shopify  
SickKids Foundation  
Sienna Senior Living  
Signal Hill Equity Partners  
Sinai Health System  
Siskinds LLP  
SLC Management  
Smile CDR Inc.  
Snap Inc.  
Sobeys Inc  
Social Capital Partners  
Sofina Foods Inc.  
Softchoice  
Sourced Group  
South End Partners  
Southlake Regional Health Centre  
SpaceRyde  
Spin Master  
SPINVFX  
Spotify  
Springboard Clinic  
Sprott  
Square  
Stablecorp Inc.  
Staples  
Staples Canada  
Starlight Investments  
StepStone Group  
Stifel Canada  
Stikeman Elliott LLP  
Storybolt  
Strategic Policy Economics  
Stratum AI  
STS Capital Partners  
Sullivan & Cromwell LLP  
Sumitomo Corporation Equity Asia  
Sun Life Financial Inc.  
Survey Monkey  
Sustainalytics  
Symbolicware  
Synergis Capital

**T**

Tableau  
Tala  
Talencity  
Tangerine  
Taptap Send

TAS Design Build  
 TD Bank  
 TEALEAVES  
 TELUS  
 Ten Spot  
 Ten Thousand Coffees  
 Tenstorrent  
 Teranet Inc.  
 Tesla  
 The Bird&Be Co.  
 The Boiler Inspection and Insurance  
 Company of Canada  
 The Cadillac Fairview Corporation Limited  
 The Clorox Company  
 The Daniels Corporation  
 The Decision Lab  
 The Entrepreneurship Hatchery  
 The Fertility Partners  
 The Hershey Company  
 The Hospital for Sick Children  
 The Jean Tweed Centre  
 The Kirchner Impact Foundation  
 The Kraft Heinz Company  
 The Marquee Group  
 The North West Company LP  
 The SIX Properties-Residential Real Estate  
 Asset Manager  
 The Walt Disney Company  
 Think Research  
 Third Eye Capital  
 Thomson Reuters  
 Thornburg Investment Management  
 Thrive Health  
 TickTrade  
 TikTok  
 TMX Group  
 Too Good to Go  
 Top Hat  
 Toronto Finance International  
 Toronto Police Service (TPS)  
 Toronto Transit Commission  
 Tory's LLP  
 Trexo Robotics  
 Trichome JWC Acquisition Corp.  
 Trillium Health Partners  
 TTG Canada  
 Tucows  
 Twitter

**U**

Uber  
 Ubiquity Solar Inc.  
 Ubisoft  
 UBS Wealth Management Canada  
 Uken Games  
 Unable to disclose yet  
 Unilever PLC  
 United Nations Capital Development Fund  
 Unity Health  
 University Health Network  
 University of Toronto  
 University of Toronto Asset Management  
 Corporation-UTAM  
 UPP-University Pension Plan Ontario

**V**

Vaco  
 Valeyo  
 Validus Risk Management  
 Vector Medical Corporation  
 Veeva Systems  
 Vena Solutions  
 Venture for Africa

Verstra Ventures  
 VerticalScope Inc  
 Vincilabs  
 VISA Canada  
 Vision Capital Corporation  
 Vital Bio Inc.  
 Volaris Group  
 Volta Circle  
 Voyager Products

**W**

Walmart Canada Corp.  
 Wasserman Media Group  
 Wattpad  
 Wave HQ  
 Weil, Gotshal & Manges LLP  
 WELL Health Technologies  
 Wells Fargo Canada  
 Wells Fargo Securities (New York)  
 Weston Foods  
 Whirlpool Corporation  
 Willis Towers Watson  
 Winnermax Capital Inc.  
 Wipro  
 Wish  
 Workday  
 World Bank Group  
 Wyse Meter Solutions

**X**

XOKind

**Y**

York Region District School Board  
 YouCount

**Z**

Zafin  
 Zhongshan Securities Co  
 Zola.com  
 ZS Associates (Canada)

## Connect with Rotman Career Services



At Rotman Career Services, our team of over 25 industry advisors and career coaches are united by the goal to both support our graduates in their search for a fulfilling career - and to provide our partners with the talent they need to meet the challenges of a fast-moving economy.

For our corporate partners, our team of seven industry advisors are dedicated to help you meet your most pressing HR challenges, while developing a robust talent pipeline that will serve your needs in the future.

As we're constantly broadening our horizons as the career landscape evolves, we encourage you to reach out to us and discover how the Rotman School at the University of Toronto, with its top-tier reputation and location close to the city's business core, is ideally positioned to provide you with the talent you need to drive your organization forward.

For more information on our employer engagement opportunities, please contact Career Services.

### **Rotman Career Services**

[career.services@rotman.utoronto.ca](mailto:career.services@rotman.utoronto.ca)

416.946.7953

[www.rotman.utoronto.ca/Connect/HireRotmanTalent](http://www.rotman.utoronto.ca/Connect/HireRotmanTalent)

## Career Services Team

Alongside our Industry Engagement team who are here to facilitate the process of finding you the best talent for your recruitment needs, our 12 dedicated Career Consultants work closely with our students to ensure they have all the necessary skills and assets to begin adding value to organizations from day one.



**Lyla Korhani**  
Director



**Sheila Schaffzin**  
Associate Director,  
Industry Engagement



**Alisha Rajani**  
Associate Director, Career  
Curriculum and Consulting



**James Kisyk**  
Industry Advisor

- CPG
- Retail
- Transportation and Logistics
- Healthcare, Pharmaceutical and Life Sciences



**Elly Bertram**  
Industry Advisor

- Technology
- Startups
- Media
- Sports and Entertainment



**Gil Panuncialman**  
Industry Advisor

- Government
- Consulting
- Not-for-Profit



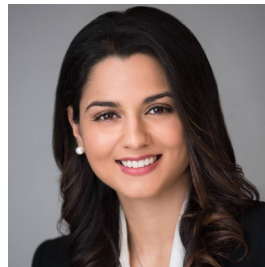
**Ryan McKee**  
Industry Advisor

- Global Financial Services & FinTech
- Global Real Estate & Infrastructure
- Global Energy, Oil & Gas and Mining



**Vrinda Mehta**  
Industry Advisor

- Canadian Banks
- Credit Cards
- Payments



**Hana Dhanji**  
Global Business Development  
Manager (New York)



# **Rotman**

## **Here's where it changes.**

## **How to Interpret Our Statistics**

### **Reporting Standards**

Rotman Career Services is a member of the MBA Career Services and Employer Alliance (MBA CSEA). The MBA CSEA together with GMAC, the organization that administers the GMAT test among other programs, set out guidelines for reporting employment, salary, and other related statistics. These guidelines establish the standards for reporting statistics to rankings as well as the MBA CSEA itself.

### **Salary Statistics**

In addition to looking at the average for salary compensation, it is important to note the median (midpoint) and range since these data points provide a broader view to how the salaries are distributed for the class. A small number of students receiving high salary offers can skew the average up while some that receive lower salary offers can skew the average down. We report in local dollars and foreign salaries are converted at the going exchange rate. Please note that exchange rate conversions are not reflective of the cost of living and wage profiles where the students are employed.

### **Employment Rate**

The employment rate is the percentage of students with accepted offers of employment, based on the number of students reporting back and actively looking for work.